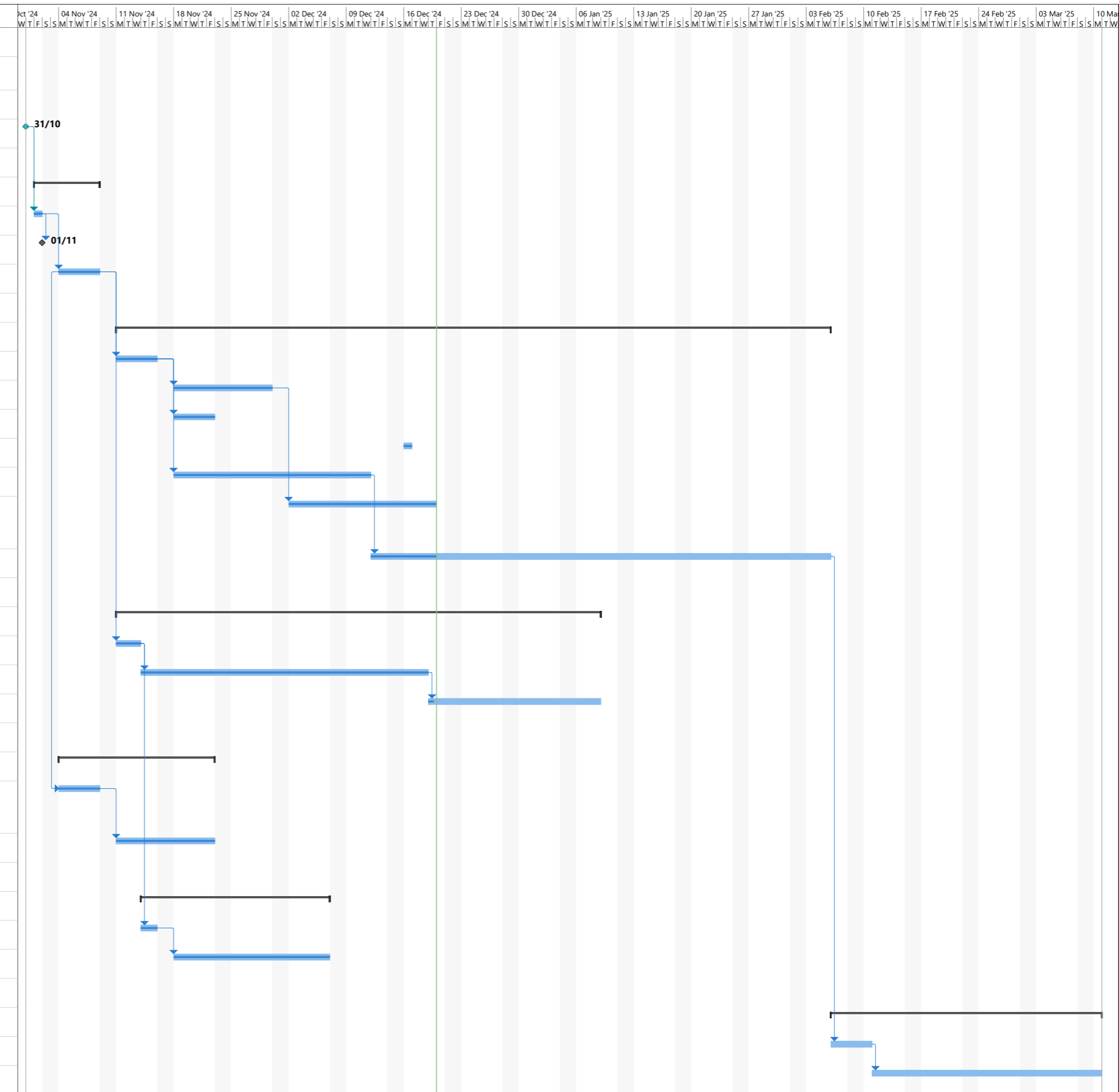


ID	Text1	Task Name	Duration	Start	Finish	Predecessors	% Complete	Oct '24	04 Nov '24	11 Nov '24	18 Nov '24	25 Nov '24	02 Dec '24	09 Dec '24	16 Dec '24	23 Dec '24	30 Dec '24	06 Jan '25	13 Jan '25	20 Jan '25	27 Jan '25	03 Feb '25	10 Feb '25	17 Feb '25	24 Feb '25	03 Mar '25	10 Mar '25	
1																												
2		<b>Moreton on Lugg Bridge Repair</b>					0%																					
3																												
4		Accident Damage	0 days	Thu 31/10/24	Thu 31/10/24		100%																					
5																												
6	1	<b>Initial Response</b>	<b>6 days</b>	<b>Fri 01/11/24</b>	<b>Fri 08/11/24</b>		<b>100%</b>																					
7	1.1	Initial structural assessment	1 day	Fri 01/11/24	Fri 01/11/24	4FS+1 day	100%																					
8	1.2	Place road closure	0 days	Fri 01/11/24	Fri 01/11/24	7	100%																					
9	1.3	Assess requirements to deliver repair	5 days	Mon 04/11/24	Fri 08/11/24	7	100%																					
10																												
11	2	<b>Ecological Requirements</b>	<b>63 days</b>	<b>Mon 11/11/24</b>	<b>Wed 05/02/25</b>		<b>63%</b>																					
12	2.1	Undertake ecological assessments	5 days	Mon 11/11/24	Fri 15/11/24	9	100%																					
13	2.2	Prepare HRSA	10 days	Mon 18/11/24	Fri 29/11/24	12	100%																					
14	2.3	Prepare SSSI Assent (if required)	5 days	Mon 18/11/24	Fri 22/11/24	12	100%																					
15	2.4	Additional ecological surveys	1 day	Mon 16/12/24	Mon 16/12/24		100%																					
16	2.5	Prepare Flood Risk Activity Permit (FRAP)	18 days	Mon 18/11/24	Wed 11/12/24	12	100%																					
17	2.6	County Ecologist review and approval (HRSA & SSSI Approach)	14 days	Mon 02/12/24	Thu 19/12/24	13	100%																					
18	2.7	EA review and approval of FRAPP	2 mons	Thu 12/12/24	Wed 05/02/25	16	15%																					
19																												
20	3	<b>Temporary Works</b>	<b>43 days</b>	<b>Mon 11/11/24</b>	<b>Wed 08/01/25</b>		<b>67%</b>																					
21	3.1	Determine temporary works approach	3 days	Mon 11/11/24	Wed 13/11/24	29	100%																					
22	3.2	Commission and undertake scaffold design	5 wks	Thu 14/11/24	Wed 18/12/24	21	100%																					
23	3.3	Scaffold design review and approval	3 wks	Thu 19/12/24	Wed 08/01/25	22	5%																					
24																												
25	4	<b>Listed Building</b>	<b>15 days</b>	<b>Mon 04/11/24</b>	<b>Fri 22/11/24</b>		<b>100%</b>																					
26	4.1	Provide summary of requirements to conservation team	5 days	Mon 04/11/24	Fri 08/11/24	9SS	100%																					
27	4.2	Review and confirmation of approach	10 days	Mon 11/11/24	Fri 22/11/24	26	100%																					
28																												
29	5	<b>Procurement</b>	<b>17 days</b>	<b>Thu 14/11/24</b>	<b>Fri 06/12/24</b>		<b>100%</b>																					
30	5.1	Identify suitable contractors	2 days	Thu 14/11/24	Fri 15/11/24	21	100%																					
31	5.2	Procure contractors	15 days	Mon 18/11/24	Fri 06/12/24	30	100%																					
32																												
33	6	<b>Repair Works</b>	<b>23 days</b>	<b>Thu 06/02/25</b>	<b>Mon 10/03/25</b>		<b>0%</b>																					
34	6.1	Mobilise for works delivery	3 days	Thu 06/02/25	Mon 10/02/25	18	0%																					
35	6.2	Repair works	4 wks	Tue 11/02/25	Mon 10/03/25	24	0%																					



Project: 24-12-20 Moreton on L  
Date: Fri 20/12/24

Task	Summary	Inactive Milestone	Duration-only	Start-only	External Milestone	Manual Progress
Split	Project Summary	Inactive Summary	Manual Summary Rollup	Finish-only	Deadline	
Milestone	Inactive Task	Manual Task	Manual Summary	External Tasks	Progress	